

YCBZ Series High Efficiency Permanent Magnet Portable Axial Flow Pump



Due to constantly progressive technology, Lamsun has the right to amend the design, without prior notice.



Lamsun Fluid



WhatsApp



WeChat

Lamsun Fluid Technology Pte.Ltd.

Tel: +6560110604

Phone: +6581506618

E-mail: contact@lamsun-pump.com

Web: <http://www.lamsun-pump.com>

Add: 55 AYER RAJAH CRESCENT, #02-02, SINGAPORE

Post Code: 139949

Lamsun Fluid Technology Pte.Ltd.

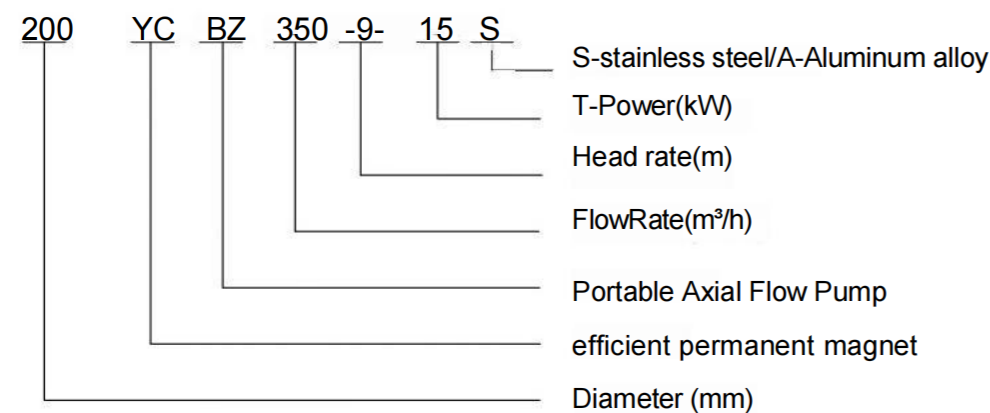
■ Product Introductions

Lamsun's self-developed YCBZ series high-flow, portable, efficient permanent magnet axial flow pump integrates the robust drainage capability of submersible sewage pumps, the high-volume conveying performance of submersible axial flow pumps, the energy-saving features of high-efficiency permanent magnet motors, infinitely variable speed regulation under vector frequency control, and lightweight portability. It is the optimal drainage solution for sudden flooding disasters, pipeline emergency repairs, sewerage maintenance, river channel dredging, underground sewage treatment plants, and fish pond cleaning operations

■ Functions

- Emergency flood resistance and drainage for disaster response
- Pipeline emergency repair and reconstruction project
- Subsurface drainage for road surfaces, underground passages, metro structures, and building basement water accumulation
- Drainage systems for bridges, tunnels, and culverts
- Basement and garage water discharge
- Drought-resistant agriculture takes water
- Emergency intake and drainage of water sources
- Discharge of stagnant water from the mine
- Commercial shipyards and dry dock drainage
- Cleaning and drainage systems for fish ponds, wastewater treatment plants, and similar applications
- Drainage of rivers before dredging

■ Product Coding



■ Product Features

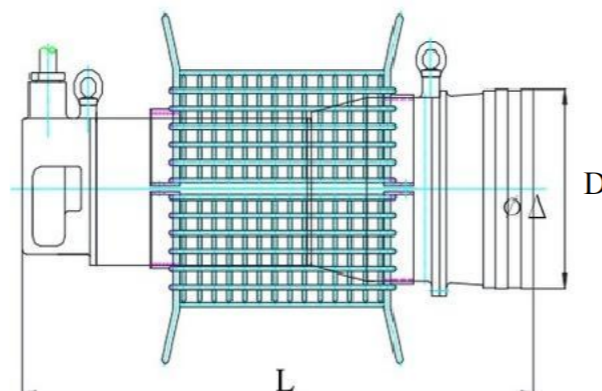
- High-flow and high-head capacity suitable for flood prevention and drainage
- Equipped with high-efficiency variable-frequency permanent magnet synchronous motors, featuring superior energy efficiency, compact size, and lightweight design
- The housing is fabricated from high-strength aluminum alloy, offering lightweight design, ease of portability, and compatibility with manual handling
- No foundation required, low cost, rapid installation, and easy relocation without compromising performance
- The outlet is equipped with quick-connect hose fittings for rapid installation and simplified operation
- The water supply pipeline incorporates lined fire hoses with lightweight construction and superior coiling performance
- Integrated structure design with enhanced sealing and bearing life, ensuring high operational reliability
- The inlet is equipped with a filter screen, and the anti-clogging impeller ensures trouble-free operation of the pump
- Equipped with double-ended mechanical seals and an oil-lubricated cooling system, providing dual protection for the motor
- Mechanical seals are fabricated with high-hardness wear-resistant materials to handle aggressive pumping media

■ Technical Data

Product	Flow rate (m³/h)	Head rate (m)	Power (kW)	Diameter (mm)	Materials	Weight (Kg)
150YCBZ150-20-15	150	20	15	150	A/S	33
150YCBZ160-25-22	160	25	22	150	A/S	33
150YCBZ300-20-30	300	20	30	150	S	80
200YCBZ400-6-11	400	6	11	200	A/S	33
200YCBZ450-7-15	450	7	15	200	A/S	33
200YCBZ400-9-18.5	400	9	18.5	200	A/S	34
200YCBZ500-9-22	500	9	22	200	A/S	35
250YCBZ600-7-22	600	7	22	250	A/S	36
250YCBZ500-10-25	500	10	25	250	A/S	37
250YCBZ600-10-30	600	10	30	250	A/S	37
250YCBZ600-13-37	600	12	37	250	A/S	37
300YCBZ1000-7-37	1000	7	37	300	S	90
300YCBZ1000-10-45	1000	10	45	300	S	90
300YCBZ800-15-55	800	15	55	300	S	120

■ Installation dimensions

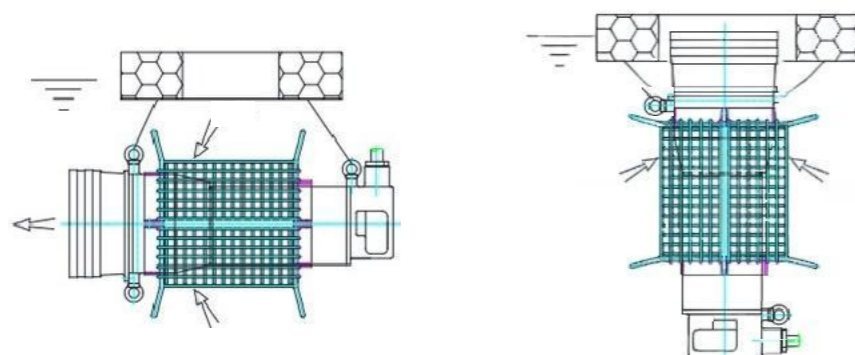
L (mm)	D (mm)
550	150
550	200
560	250
580	300



■ Installation

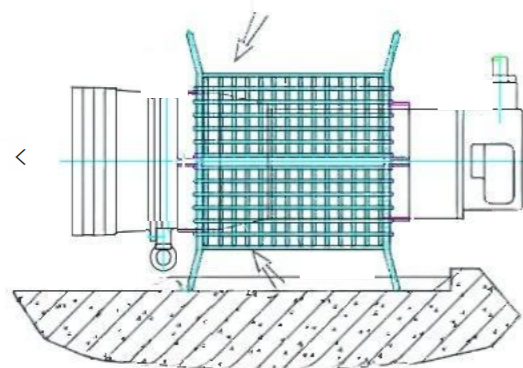
1, Horizontal or vertical float-mounted installation

The electric pump can be directly suspended from simple floats (e.g., life rings, tires) for operation in reservoirs, lakes, and rivers. This floating system adapts to water level fluctuations and allows easy adjustment of the pump position.



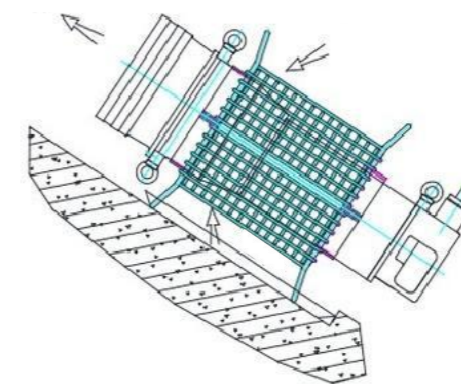
2, Mobile installation

Suitable for flat and well-supported waterlogged surfaces, such as roads, tunnels, subway structures, and building basements.



3, Sled-type installation

Applicable to relatively flat and well-supported inclined surfaces, such as riverbanks, reservoir dams, and electric pump submersion for water intake.



■ Scope of Supply

The system comprises a main unit (equipped with a filter screen and 20-meter pre-installed cable), an outdoor stainless steel control box (containing a vector frequency inverter with overload-free operation), and a float ring assembly.



■ Applications



Temporary high-volume drainage operations for tunnel drainage and heavy rainfall flood prevention drainage



Pre-dredging Subsurface Drainage for Sewer Manholes in Riverbed Dredging

■ Ordering Instructions

1. Confirm the flow rate and head of the high-efficiency permanent magnet portable axial flow pump before ordering.
2. Specify material requirements for the high-efficiency permanent magnet portable axial flow pump.
3. Note the cable length (standard factory-supplied 20 meters) and optional extension options.
4. Define the installation method (e.g., sled-type, float-mounted, or wall-mounted).